



HYATT REGENCY BANGKOK SUKHUMVIT

LOCATION



Located in the vibrant and trendy urban oasis of Bangkok's Sukhumvit Road, Hyatt Regency Bangkok Sukhumvit is centrally situated at the corner of Sukhumvit Road Soi 13 with easy access to surrounding commercial buildings and entertainment attractions. About 25km (15.5 miles) from Bangkok Suvarnabhumi International Airport and also Don Mueang International Airport.

HOTEL ENTRANCE



The hotel is part of a mixed use real estate development which includes a luxurious condominium opened three years ago, and retail space owned by one of the most prominent real estate developers in Thailand.

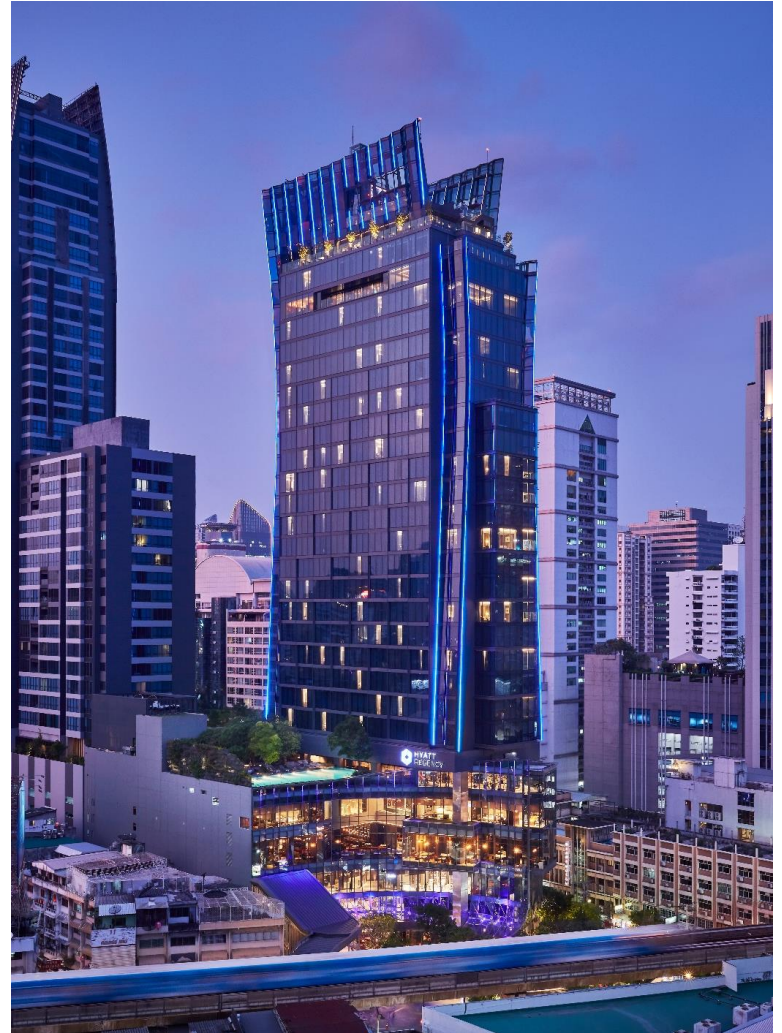
BTS CONNECTING BRIDGE



The hotel will be connected to a sky bridge linking the hotel with the BTS Sky Train Nana Station.

HYATT REGENCY BANGKOK SUKHUMVIT

- **Brief Overview**
 - Centrally situated on Sukhumvit Road
 - Direct skybridge access to Nana BTS station
 - A modern Thai house designed
 - Total of 273 rooms
 - Over 1,300 sq m (13,993 sq ft) of meeting space
 - Architect: OBA Bangkok
 - ID: PIA Bangkok & Super Potato Japan



HYATT REGENCY BANGKOK SUKHUMVIT

- **F&B Outlet**
 - The Lobby Lounge (L1)
 - Market Café (L4)
 - Poolside Lounge (L6)
 - Regency Club Lounge (L27)
 - Spectrum Lounge & Bar (L29-L31)
- **Event Spaces**
 - Regency Ballroom (L5)
 - Regency I, II, III, IV (L5)
- **Fitness & Spa**
 - StayFit Gym (L6)
 - Outdoor free form pool with outdoor Jacuzzi (L6)
- **273 Guestrooms**
 - 165 Standard rooms
 - 29 Deluxe rooms
 - 53 Club rooms
 - 5 Club Deluxe rooms
 - 10 Regency Suites
 - 4 Regency Deluxe Suites
 - 3 Regency Executive Suites
 - 3 Premier Suites
 - 1 Presidential Suite

*165 king and 108 twin rooms

Level 29-30-31:
Spectrum Lounge & Bar

Level 27:
Regency Club Lounge

Level 28:
Presidential Suite

Level 7-26:
Accommodations

Level 6: Swimming
Pool & StayFit Gym

Level 4: Market Café

Level 5: Event Spaces

Direct Sky-Bridge
Access to BTS Nana

Hotel Lobby & The
Lobby Lounge

HOTEL LOBBY



Hyatt Regency Bangkok Sukhumvit will be a modern Thai house designed to foster connections; a place where guests can share, socialize and collaborate with the touches of art and craftsmanship, reflecting the modern city life style of Thai culture and living.

HOTEL LOBBY



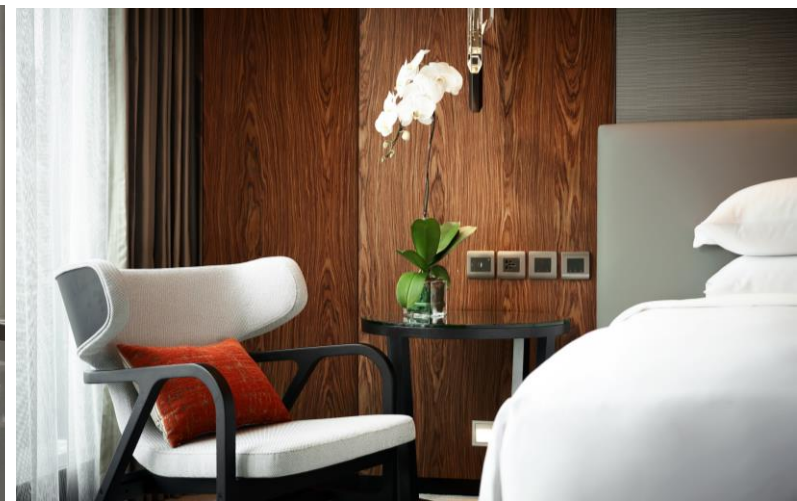
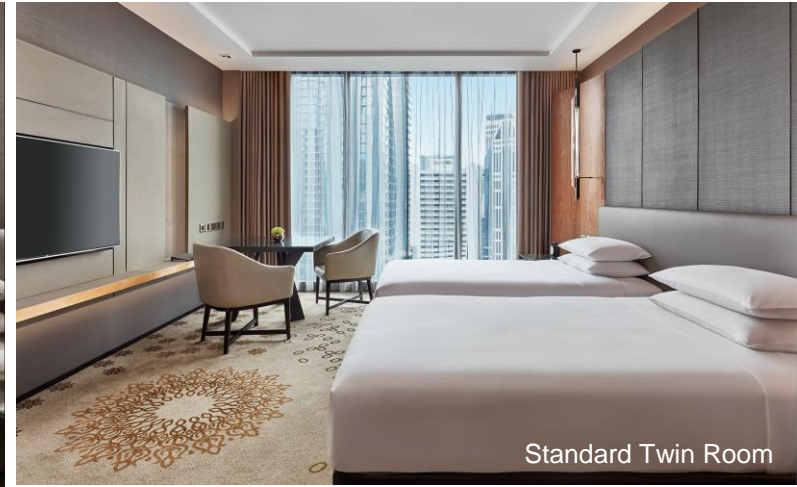
Depicting golden periods of Thai history (the eras of Sukhothai, Ayutthaya and Rattanakosin), the gold element portrays ancient Thai architecture, ornaments and local arts and crafts.

THE LOBBY LOUNGE



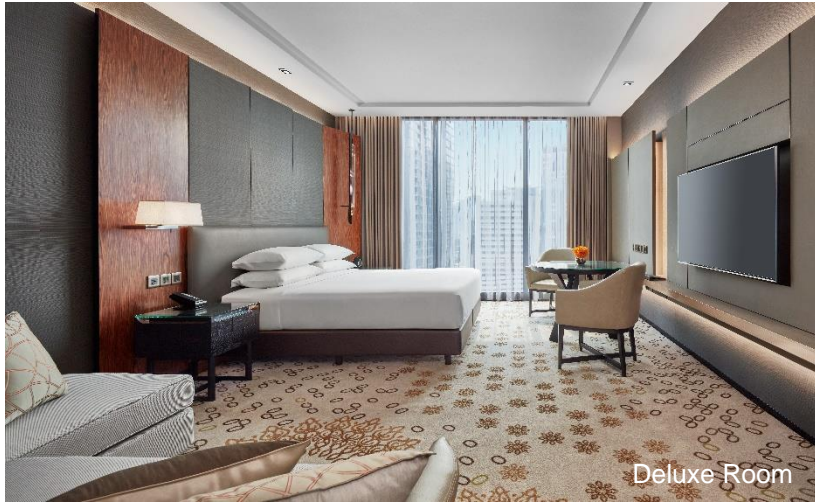
This 47-seat social space in the lobby helps guests to conveniently get their work done, from creating presentations to brainstorming new ideas, while being part of the social life of the hotel and having access to the F&B offerings with a multi purpose bar and live music.

GUESTROOM

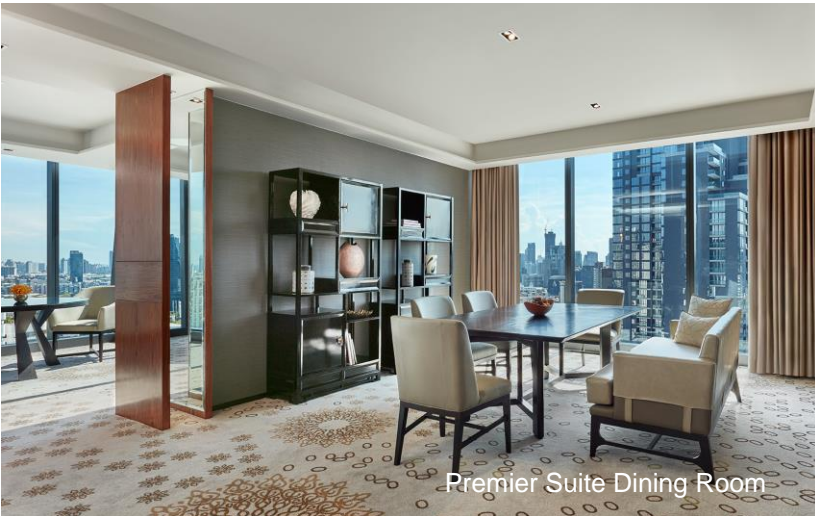


The 35 sq m (376 sq ft) guestrooms are decorated with contemporary Thai touches. The rooms feature a semi-open plan bathroom, separate rain shower and bathtub, a 55-inch LED TV and complimentary wireless Internet.

GUESTROOM



GUESTROOM



REGENCY CLUB LOUNGE



The 277 sq m (2,981 sq ft) lounge on the 27th floor offers stunning views of the city through its natural day light floor-to-ceiling glass windows with 66 comfortable seats both indoors and outdoors. Boardroom space for 12, with exclusive F&B offerings through the on-site kitchen, is also available.

DINING EXPERIENCE



The hotel offers distinguished dining experiences through different venues including a Market Café, Sukhumvit Gallery, The Lobby Lounge and Spectrum Lounge and Bar.

DINING EXPERIENCE - MARKET CAFÉ



Market Café is a Thai restaurant offering international buffet breakfast and authentic Thai cuisine for lunch and dinner. It features show kitchen, food counters, an outdoor terrace and a private room.

SUKHUMVIT GALLERY



Sukhumvit Gallery presents an exhibition of rare photographs revealing the untold history of Sukhumvit Road, the most important thoroughfare in the city of Bangkok. The gallery also serves Sukhumvit Gallery Afternoon Tea with unique presentation inspired by contemporary Thai art ([Learn More](#)).

SPECTRUM LOUNGE & BAR



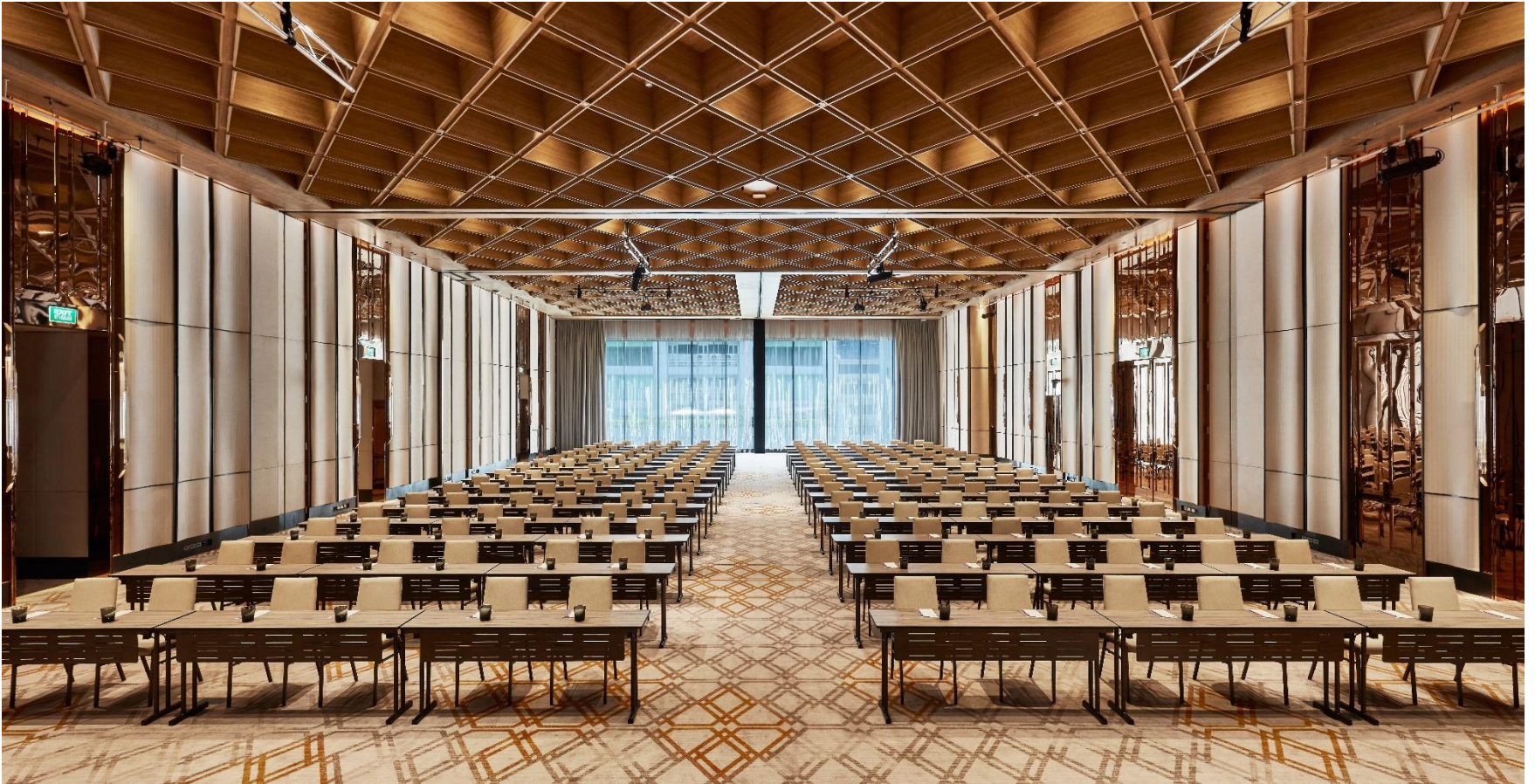
Spectrum Lounge & Bar is a multi-faceted venue that offers residential style event venue during the day for interactive meetings, product launches, engagement ceremonies or private receptions for up to 50 people. In the evening, the lounge transforms into a live piano bar and dinner setting serving a selection of premium Western dishes.

SPECTRUM LOUNGE & BAR



A vibrant rooftop bar on Level 30 serves classic and creative cocktails, together with bar snacks and high-energy music by international DJs.

REGENCY BALLROOM



Hyatt Regency Bangkok Sukhumvit also offers a total of 1,359 square meters (14,628 sq ft) of meeting and event spaces for various types of occasions. The pillar-less Regency Ballroom with a 6 m (19.6 ft) ceiling height can accommodate up to 850 guests.

REGENCY BALLROOM PRE-FUNCTION



In the loft kitchen at the Ballroom Pre-Function area, guests can enjoy light meals and premium cocktails in a communal setting, as the experienced chefs and event service team prepare exquisite cuisine a la minute for parties or coffee breaks.

EVENTS LOUNGE



Located at the corner of the 5th floor event space, the cluster seating for 4 - 8 provides comfort and communal space for working or socializing.

Regency I, II, III, IV



The Regency I, II, III, IV provide flexible event space, from boardroom setting for 24 persons to 140 persons at a cocktail reception in combined with natural day-light through a floor- to-ceiling glass panel.

SWIMMING POOL



On the 6th floor, the hotel provides recreation facilities including the outdoor free form pool surrounded by lush vegetation with an outdoor Jacuzzi, shade/no shade pool chairs, a pool bar, lockers and steam room.

FITNESS CENTRE



The StayFit gym is open 24 hours overlooks the city and features a cardio zone, strength zone and free weights.

ADDITIONAL INFORMATION

POINTS OF INTEREST

- Grand Palace & Emerald Buddha
- Erawan Shrine
- National Museum
- Chatuchak Weekend Market
- Lumpini Park
- Jim Thompson House
- SEA LIFE Bangkok Ocean World
- Pantip Plaza IT Market
- MBK, Siam Paragon, CentralWorld, Emporium, Emquartier, Terminal 21 Malls
- Asiatique Riverfront
- Bumrungrad International Hospital
- Queen Sirikit Convention Center
- Benjakiti Park

VISITOR INFORMATION

- Language: Thai, English
- Currency: Thai Baht (THB)
- Weather: Bangkok has a tropical climate with average temperature ranging from 20 °C /68 °F in January to 36 °C/97 °F in April
- Rainy season from June to October
- Voltage: 220V
- Contact your travel planner or airline for up-to-date visa information

ADDITIONAL INFORMATION

About Hyatt Regency:

The Hyatt Regency brand prides itself on connecting travelers to who and what matters most to them. More than 180 conveniently located Hyatt Regency urban and resort locations in over 30 countries around the world serve as the go-to gathering space for every occasion – from efficient business meetings to memorable family vacations. The brand offers a one-stop experience that puts everything guests need right at their fingertips. Hyatt Regency hotels and resorts offer a full range of services and amenities, including the space to work, engage or relax; notable culinary experiences; technology-enabled ways to collaborate; and expert meeting and event planners who can take care of every detail.

The background features a solid dark blue color with several large, overlapping, semi-transparent circles in a lighter shade of blue. The circles are positioned in the upper right and lower right areas, creating a layered effect. The text "THANK YOU" is centered on the left side of the image.

THANK YOU